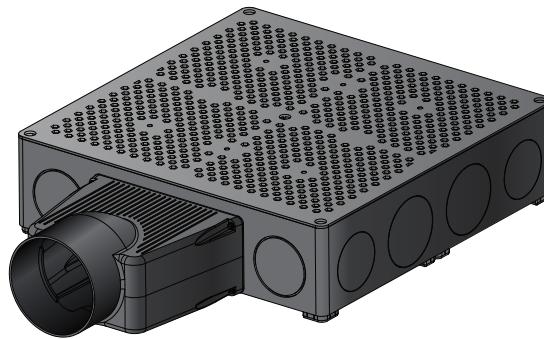


MARINO CELL PIPE ADAPTOR

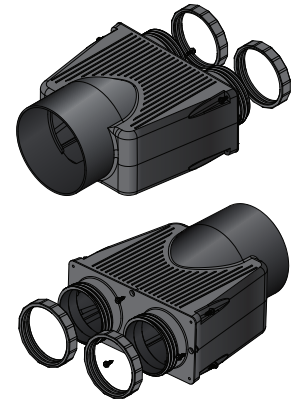
The new Marino Cell Pipe Adaptor creates the connection of a 150mm pvc pipe, SDR 35 to the Marino Cell system, ensuring efficient flow in stormwater management and green infrastructure applications.

KEY FEATURES:

- Seamless Integration: Designed specifically for use with Marino Cell, allowing for a secure and reliable connection to 150mm pvc pipes, SDR 35
- Material: Polypropylene
- Held in place by threaded nut connection
- Enhanced Site Design Flexibility
- Optimized Water Flow: Supports efficient drainage and stormwater management within green infrastructure applications
- Easy Installation



ID is 159.50 mm
OD is 166.50 mm

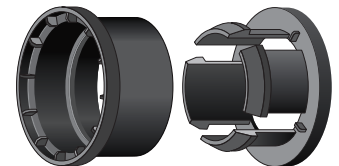
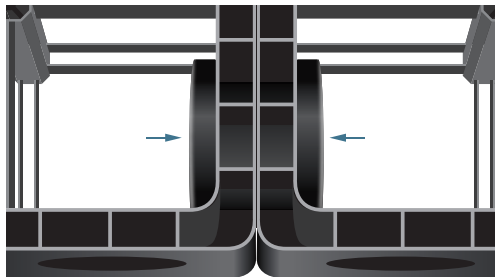


MARINO CELL CONNECTOR

The Marino Cell Connector securely joins two Marino Cells, providing increased stability and alignment where a connected system is preferred. Designed for quick and easy assembly, and made from recycled polypropylene the Marino Cell Connector is built for all project conditions.

KEY FEATURES:

- Provides a secure connection between Marino Cells
- Enhances system strength and alignment
- Made from recycled materials
- Simple, tool-free installation



MARINO CELL CAPS

The Marino Cell Caps are designed to give you more control in your stormwater project, restricting or reducing flow as needed. They are sized to fit the two openings on the perimeter of the Marino Cell — and they snap into place to secure the closure of the aperture. The Marino Cell Caps can be deployed as needed and installed on site to meet the design goals of each application. Backfill can be applied directly to the perimeter edge once the caps are secured in place.

KEY FEATURES:

- Simple and lightweight
- Snap-in-place design
- Restricts waterflow
- Allows for backfill against perimeter walls without use of geotextile (edited)

